

SAN BERNARDINO
COUNTY

CITY OF
JURUPA VALLEY

CITY OF
EASTVALE

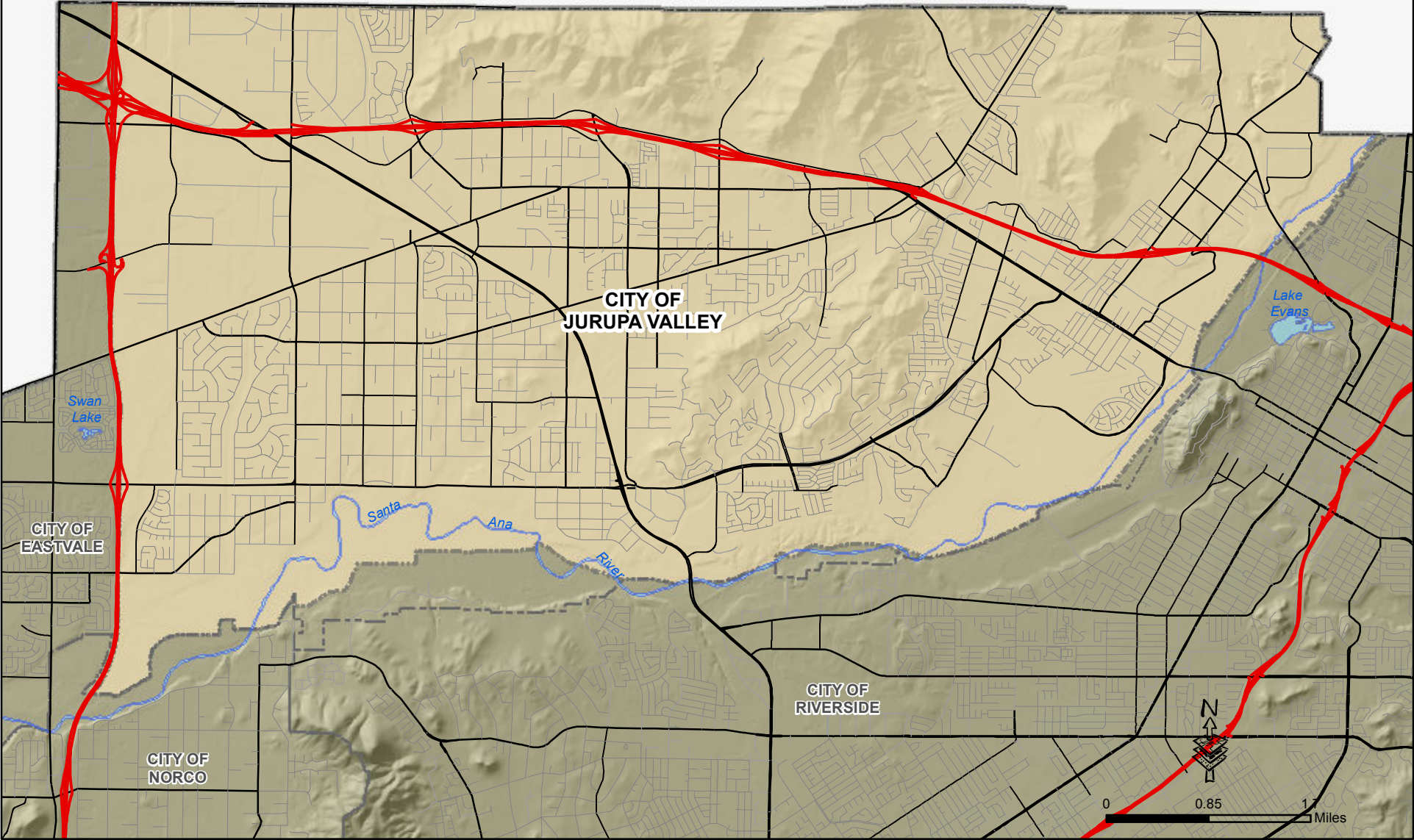
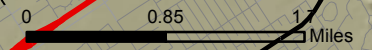
CITY OF
NORCO

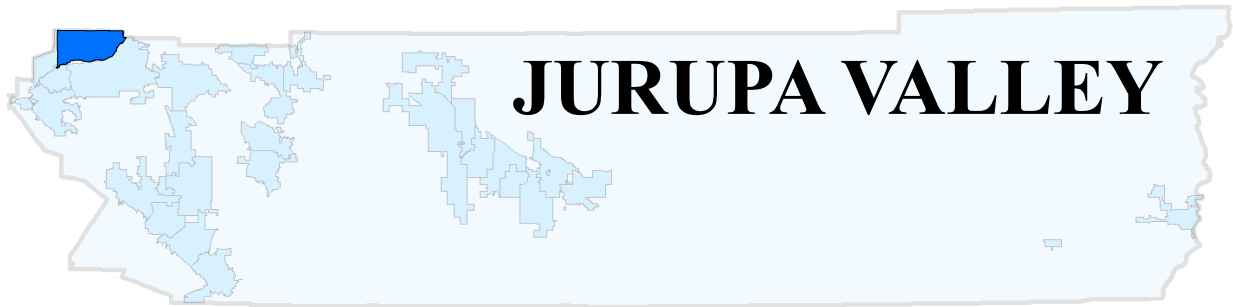
CITY OF
RIVERSIDE

Swan
Lake

Lake
Evans

Santa
Ana
River





JURUPA VALLEY

43.7 sq.miles

Incorporated in 2011

POPULATION CHARACTERISTICS

Population		2010 Racial & Ethnic Population (*1)				2010 Population by Age (*1)																							
Year			Number	Percent		Number	Percent																						
1970	-	White	24,699	26.0%	< 5	7,581	8.0%																						
1980	-	African American	3,244	3.4%	5-9	7,816	8.2%																						
1990	-	Asian	2,318	2.4%	10-14	8,197	8.6%																						
1995	-	Amer Indian/Alaska Native	316	0.3%	15-19	8,917	9.4%																						
1996	-	Hawaiian and Pac Islander	221	0.2%	20-24	7,639	8.0%																						
1997	-	Some Other Races	144	0.2%	25-34	12,636	13.3%																						
1998	-	Two or More Races	1,185	1.2%	35-44	12,566	13.2%																						
1999	-	Hispanic*	62,877	66.2%	45-54	12,716	13.4%																						
2000	-	Total	95,004	100.0%	55-59	5,143	5.4%																						
2001	-	* Hispanic can be of any race			60-64	3,943	4.2%																						
2002	-	Vital Statistics (*4) <table border="1"> <thead> <tr> <th>Year</th> <th>Total Births</th> <th>Birth Rate*</th> <th>Total Death</th> <th>Death Rate*</th> </tr> </thead> <tbody> <tr> <td>2007</td> <td>-</td> <td>-</td> <td>-</td> <td>-</td> </tr> <tr> <td>2008</td> <td>-</td> <td>-</td> <td>-</td> <td>-</td> </tr> <tr> <td>2009</td> <td>1,497</td> <td>-</td> <td>485</td> <td>-</td> </tr> </tbody> </table>				Year	Total Births	Birth Rate*	Total Death	Death Rate*	2007	-	-	-	-	2008	-	-	-	-	2009	1,497	-	485	-	65-74	4,593	4.8%	
Year	Total Births					Birth Rate*	Total Death	Death Rate*																					
2007	-	-	-	-																									
2008	-	-	-	-																									
2009	1,497	-	485	-																									
2003	-					75-84	2,340	2.5%																					
2004	-					85+	917	1.0%																					
2005	-					Total	95,004	100.0%																					
2006	-					Median Age:		27.8																					
2007	-					% of County:		4.3%																					
2008	-																												
2009	-																												
2010	95,004 (*1)																												
2011	96,680 (*2)																												
Projections		2011 Voter Registration (*5)				2010 Population by Sex (*1)																							
			Number	Percent		Number	Percent																						
2020	103,713 (*3)	Democrat	-	-	Male	47,882	50.4%																						
2025	112,498 (*3)	Republican	-	-	Female	47,122	49.6%																						
2030	119,957 (*3)	Other	-	-	Total	95,004	100.0%																						
2035	125,950 (*3)	No Party Preference	-	-																									
		Total Registered	-	-																									

Sources: (*1) Decennial Census, US Census Bureau

(*2) July Estimate, CA State Dept. of Finance

(*3) Riverside County Projections (RCP10)

(*4) Riverside County Department of Public Health

(*5) California Secretary of State, February 2011

Note: Totals might not add up due to rounding.

Comparing data between years may be problematic because of incorporations & annexations.

Projections are based on January 1, 2008 boundary; therefore current or future dwelling units in the annexed area may not be reflected in these projections.

JURUPA VALLEY

HOUSING & HOUSEHOLD CHARACTERISTICS

Housing Units		Housing Units by Type					
		2000 (*1)	Percent	2010 (*6)	Percent		
1970	-	Single Detached	-	20,050	75.7%		
1980	-	Single Attached	-	966	3.6%		
1990	-	Multi-Family: 2 to 4	-	835	3.2%		
2000	-	Multi-Family: 5 Plus	-	2,397	9.1%		
2001	-	Mobile Homes	-	2,233	8.4%		
2002	-	Total Units	-	26,481	100.0%		
2003	-	Occupancy	-	24,804	93.7%		
2004	-	Vacancy	-	1,677	6.3%		
2005	-	Median Home Price (*4)					
2006	-	2001	\$145,500	Housing Unit Building Permits (*5)			
2007	-	2002	\$171,250				
2008	-	2003	\$215,000				
2009	-	2004	\$287,500				
2010	26,481 (*1)	2005	\$392,500				
2011	26,644 (*2)	2006	\$443,750				
		2007	\$419,500				
		2008	\$246,000				
		2009	\$163,875				
		2010	\$168,500				
		2011*	\$166,750				
		*Jan-Sept 2011		Year	Single-Family Structure	All Multi-Family Structure	Total Units
		Persons Per Occupied Housing Unit (*1)		1991	-	-	-
		2000	-	1992	-	-	-
		2010	3.80	1993	-	-	-
				1994	-	-	-
				1995	-	-	-
				1996	-	-	-
				1997	-	-	-
				1998	-	-	-
				1999	-	-	-
				2000	-	-	-
				2001	-	-	-
				2002	-	-	-
				2003	-	-	-
				2004	-	-	-
				2005	-	-	-
				2006	-	-	-
				2007	-	-	-
				2008	-	-	-
				2009	-	-	-
				2010	-	-	-

Sources: (*1) Decennial Census, US Census Bureau

(*2) January Estimate, CA State Dept. of Finance. DOF will further benchmark and adjust the data with 2010 Census.

(*3) Riverside County Projections (RCP10)

(*4) DataQuick Reports

(*5) US Department of Housing & Urban Development, State of the Cities Data Systems

(*6) 2005-2009 American Community Survey 5-Year Estimates and 2010 Decennial Census

Note: Totals might not add up due to rounding.

Comparing data between years may be problematic because of incorporations & annexations.

Projections are based on January 1, 2008 boundary; therefore current or future dwelling units in the annexed area may not be reflected in these projections.

JURUPA VALLEY

ECONOMIC AND LABOR FORCE CHARACTERISTICS

Labor Force Participation (*1)				
Year	Labor Force	Employed	Unemployed	Unemployment Rate
2006	-	-	-	-
2007	-	-	-	-
2008	-	-	-	-
2009	-	-	-	-
2010	-	-	-	-
2011*	-	-	-	-

* Preliminary October 2011 data

Employment/Jobs Projections (*3)	
2020	34,397
2035	53,466

* Jobs within city boundary

2009 Employment/Jobs by Industry Sector* (*2)	
Agriculture, Forestry, Fishing and Hunting	178
Mining, Quarrying, and Oil and Gas Extraction	86
Utilities	189
Construction	2,575
Manufacturing	2,604
Wholesale Trade	1,747
Retail Trade	3,316
Transportation and Warehousing	2,474
Information	150
Finance and Insurance	243
Real Estate and Rental and Leasing	218
Professional, Scientific, and Technical Services	581
Management of Companies and Enterprises	222
Administration & Support, Waste Mngt and Remediation	961
Educational Services	2,276
Health Care and Social Assistance	1,016
Arts, Entertainment, and Recreation	174
Accommodation and Food Services	1,212
Other Services (excluding Public Administration)	857
Public Administration	214
Total All Jobs	21,293

*Jobs within city boundary

Median Household Income	
2000	- (*4)
2009	\$ 55,803 (*5)

Taxable Sales in 1,000s of Dollars (*6)		
Year	Total	% of County
2003	-	-
2004	-	-
2005	-	-
2006	-	-
2007	-	-
2008	-	-
2009	-	-

Sources: (*1) CA Employment Development Department (City residents working anywhere. Data are not seasonally adjusted)
 (*2) U.S. Census Bureau Local Employment Dynamics
 (*3) Riverside County Projections (RCP10)
 (*4) Decennial Census, US Census Bureau (in 1999 inflation-adjusted dollars).
 (*5) 2005-2009 American Community Survey 5-Year Estimates (in 2009 inflation-adjusted dollars).
 (*6) State Board of Equalization

Note: Totals might not add up due to rounding.
 Comparing data between years may be problematic because of incorporations & annexations.
 Projections are based on January 1, 2008 boundary; therefore, current or future employment in the annexed area may not be reflected in these projections.