

SAN BERNARDINO
COUNTY

WAVENUE L

CITY OF
CALIMESA

CALIMESA BLVD

El Casco
Lake

70

CHERRY VALLEY BLV

BROOKSIDE AVE

SANTIMOTO CANYON RD

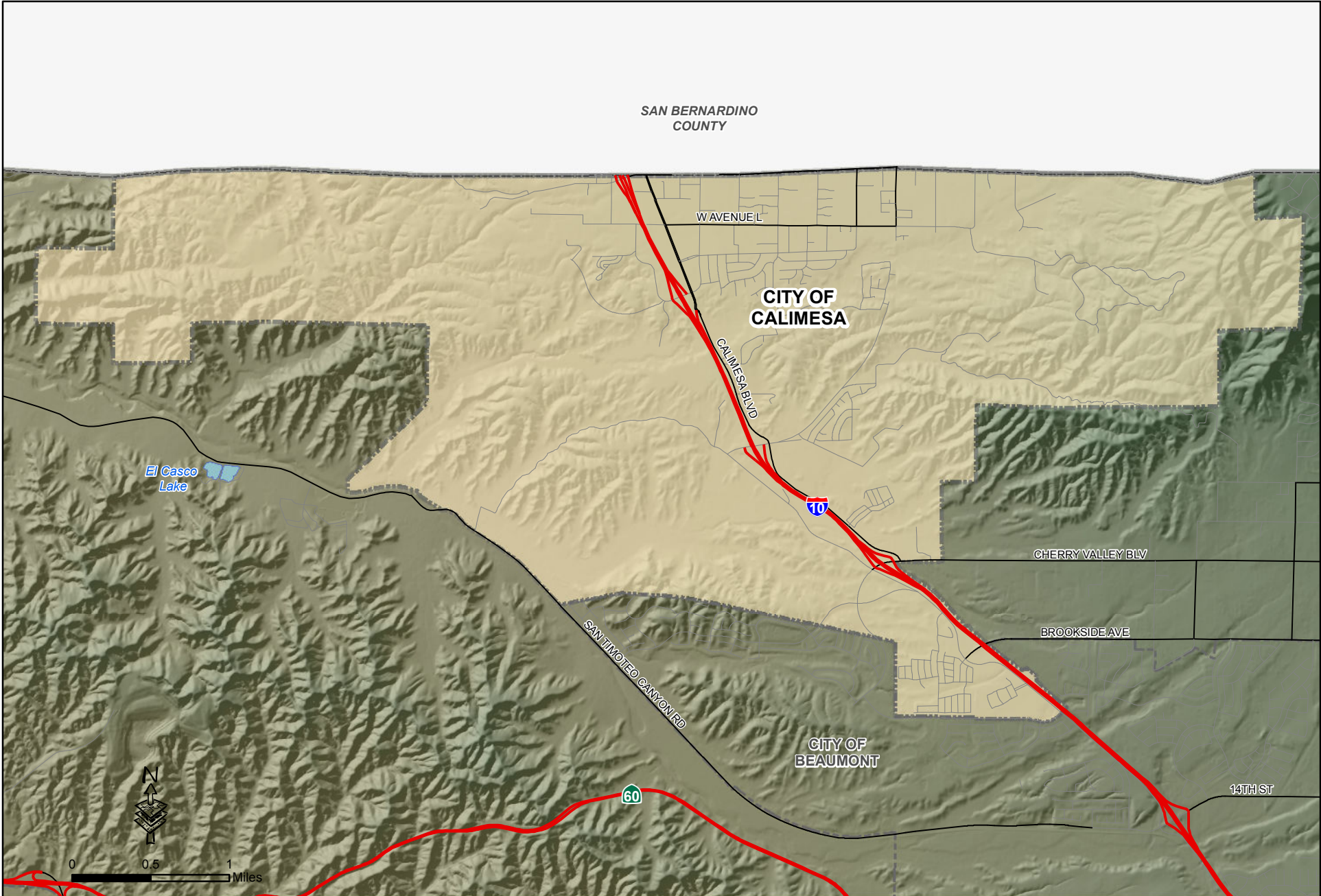
CITY OF
BEAUMONT

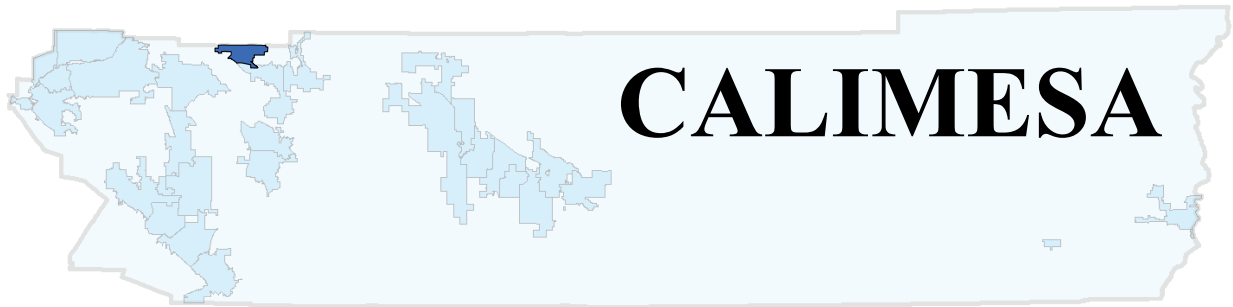
60

14TH ST



0 0.5 1 Miles





CALIMESA

14.9 sq.miles

Incorporated in 1990

POPULATION CHARACTERISTICS

Population		2012 Racial & Ethnic Population (*4)				2012 Population by Age (*4)																															
			Number	Percent		Number	Percent																														
1970	-	White	6,070	75.9%	< 5	272	3.4%																														
1980	-	African American	40	0.5%	5-9	296	3.7%																														
1990	-	Asian	80	1.0%	10-14	416	5.2%																														
1995	6,925 (*2)	Amer Indian/Alaska Native	0	0.0%	15-19	424	5.3%																														
1996	6,925 (*2)	Hawaiian and Pac Islander	0	0.0%	20-24	304	3.8%																														
1997	6,975 (*2)	Some Other Races	0	0.0%	25-34	712	8.9%																														
1998	7,025 (*2)	Two or More Races	248	3.1%	35-44	664	8.3%																														
1999	7,075 (*2)	Hispanic*	1,560	19.5%	45-54	1,096	13.7%																														
2000	7,139 (*1)	Total	7,998	100.0%	55-59	776	9.7%																														
2001	7,244 (*2)	* Hispanic can be of any race			60-64	680	8.5%																														
2002	7,369 (*2)	Vital Statistics (*5) <table border="1"> <thead> <tr> <th>Year</th> <th>Total Births</th> <th>Birth Rate*</th> <th>Total Death</th> <th>Death Rate*</th> </tr> </thead> <tbody> <tr> <td>2008</td> <td>66</td> <td>8.5</td> <td>118</td> <td>15.2</td> </tr> <tr> <td>2009</td> <td>64</td> <td>8.3</td> <td>116</td> <td>15.0</td> </tr> <tr> <td>2010</td> <td>67</td> <td>8.5</td> <td>107</td> <td>13.5</td> </tr> </tbody> </table> * Rates per 1,000 population				Year	Total Births	Birth Rate*	Total Death	Death Rate*	2008	66	8.5	118	15.2	2009	64	8.3	116	15.0	2010	67	8.5	107	13.5	65-74	1,048	13.1%									
Year	Total Births					Birth Rate*	Total Death	Death Rate*																													
2008	66					8.5	118	15.2																													
2009	64					8.3	116	15.0																													
2010	67					8.5	107	13.5																													
2003	7,505 (*2)	75-84	1,056	13.2%																																	
2004	7,579 (*2)	85+	256	3.2%																																	
2005	7,601 (*2)	Total	8,000	100.0%																																	
2006	7,608 (*2)	Median Age:			54.3																																
2007	7,605 (*2)	% of County:			0.4%																																
2008	7,626 (*2)	2012 Voter Registration (*6) <table border="1"> <thead> <tr> <th></th> <th>Number</th> <th>Percent</th> </tr> </thead> <tbody> <tr> <td>Democrat</td> <td>1,178</td> <td>29.1%</td> </tr> <tr> <td>Republican</td> <td>1,992</td> <td>49.2%</td> </tr> <tr> <td>Other</td> <td>226</td> <td>5.6%</td> </tr> <tr> <td>No Party Preference</td> <td>653</td> <td>16.1%</td> </tr> <tr> <td>Total Registered</td> <td>4,049</td> <td>100.0%</td> </tr> </tbody> </table>					Number	Percent	Democrat	1,178	29.1%	Republican	1,992	49.2%	Other	226	5.6%	No Party Preference	653	16.1%	Total Registered	4,049	100.0%	2012 Population by Sex (*4) <table border="1"> <thead> <tr> <th></th> <th>Number</th> <th>Percent</th> </tr> </thead> <tbody> <tr> <td>Male</td> <td>3,950</td> <td>49.4%</td> </tr> <tr> <td>Female</td> <td>4,048</td> <td>50.6%</td> </tr> <tr> <td>Total</td> <td>7,998</td> <td>100.0%</td> </tr> </tbody> </table>			Number	Percent	Male	3,950	49.4%	Female	4,048	50.6%	Total	7,998	100.0%
	Number					Percent																															
Democrat	1,178					29.1%																															
Republican	1,992					49.2%																															
Other	226					5.6%																															
No Party Preference	653	16.1%																																			
Total Registered	4,049	100.0%																																			
	Number	Percent																																			
Male	3,950	49.4%																																			
Female	4,048	50.6%																																			
Total	7,998	100.0%																																			
2009	7,747 (*2)																																				
2010	7,879 (*1)																																				
2011	7,910 (*2)																																				
2012	7,998 (*2)																																				
Projections																																					
2020	14,858 (*3)																																				
2035	25,751 (*3)																																				

Sources: (*1) Decennial Census, US Census Bureau

(*2) January Estimate, CA State Department of Finance

(*3) Riverside County Projections (RCP10)

(*4) American Community Survey 2007-2011 5-Year Estimates and CA State Department of Finance

(*5) Riverside County Department of Public Health

(*6) California Secretary of State, September 2012

Note: Totals might not add up due to rounding.

Comparing data between years may be problematic because of incorporations & annexations.

Projections are based on April 1, 2010 boundary; therefore current or future dwelling units in the annexed area may not be reflected in these projections.

CALIMESA

HOUSING & HOUSEHOLD CHARACTERISTICS

Housing Units			Housing Units by Type				
Year	Units	Source	2010 (*1)	Percent	2012 (*2)	Percent	
1970	-						
1980	-						
1990	-						
2000	3,248	(*1)	2,189	59.4%	2,200	59.5%	
2001	3,262	(*2)	130	3.5%	130	3.5%	
2002	3,278	(*2)	52	1.4%	52	1.4%	
2003	3,296	(*2)	0	0.0%	0	0.0%	
2004	3,300	(*2)	1,316	35.7%	1,316	35.6%	
2005	3,307	(*2)	3,687	100.0%	3,698	100.0%	
2006	3,324	(*2)					
2007	3,335	(*2)					
2008	3,385	(*2)					
2009	3,385	(*2)					
2010	3,687	(*1)					
2011	3,686	(*2)					
2012	3,698	(*2)					
Projections							
2020	6,804	(*3)					
2035	11,858	(*3)					

Median Home Price (*4)		Housing Unit Building Permits (*5)			
Year	Price	Year	Single-Family Structure	All Multi-Family Structure	Total Units
2002	\$159,000	1995	27	0	27
2003	\$189,000	1996	15	0	15
2004	\$260,000	1997	19	0	19
2005	\$332,500	1998	15	0	15
2006	\$337,000	1999	31	0	31
2007	\$314,000	2000	15	0	15
2008	\$237,500	2001	3	0	3
2009	\$161,500	2002	20	0	20
2010	\$160,000	2003	8	0	8
2011	\$150,000	2004	9	0	9
2012*	\$222,500	2005	12	2	14
		2006	15	0	15
		2007	44	0	44
		2008	0	0	0
		2009	1	0	1
		2010	0	0	0
		2011	13	0	13
		2012*	19	0	19

Persons Per Household			
Year	Persons	Source	Notes
2000	2.36	(*1)	
2010	2.36	(*1)	
2012	2.39	(*2)	

*October 2011

* Preliminary October 2012

Sources: (*1) Decennial Census, US Census Bureau

(*2) January Estimate, CA State Dept. of Finance.

(*3) Riverside County Projections (RCP10)

(*4) DataQuick Reports

(*5) US Department of Housing & Urban Development, State of the Cities Data Systems

Note: Totals might not add up due to rounding.

Comparing data between years may be problematic because of incorporations & annexations.

Projections are based on April 1, 2010 boundary; therefore current or future dwelling units in the annexed area may not be reflected in these projections.

CALIMESA

ECONOMIC AND LABOR FORCE CHARACTERISTICS

Labor Force Participation (*1)				
Year	Labor Force	Employed	Unemployed	Unemployment Rate
2007	4,200	4,000	200	4.5%
2008	4,200	3,900	300	6.4%
2009	4,200	3,700	400	10.3%
2010	4,100	3,700	500	11.3%
2011	4,300	3,800	400	10.4%
2012*	4,300	3,900	400	9.2%

* Preliminary October 2011

Employment/Jobs Projections (*3)	
2020	2,774
2035	4,499

* Jobs within city boundary

2010 Employment/Jobs by Industry Sector* (*2)	
Agriculture, Forestry, Fishing and Hunting	0
Mining, Quarrying, and Oil and Gas Extraction	6
Utilities	1
Construction	695
Manufacturing	57
Wholesale Trade	35
Retail Trade	148
Transportation and Warehousing	6
Information	6
Finance and Insurance	37
Real Estate and Rental and Leasing	31
Professional, Scientific, and Technical Services	46
Management of Companies and Enterprises	0
Administration & Support, Waste Mngt and Remediation	9
Educational Services	56
Health Care and Social Assistance	65
Arts, Entertainment, and Recreation	99
Accommodation and Food Services	254
Other Services (excluding Public Administration)	60
Public Administration	21
Total All Jobs	1,632

*Jobs within city boundary

Median Household Income	
2000	\$ 37,849 (*4)
2011	\$ 44,911 (*5)

Taxable Sales in 1,000s of Dollars (*6)		
Year	Total	% of County
2003	\$34,896	0.2%
2004	\$40,742	0.2%
2005	\$44,642	0.2%
2006	\$50,575	0.2%
2007	\$51,047	0.2%
2008	\$54,285	0.2%
2009	\$53,092	0.2%
2010	\$51,057	0.2%

Sources: (*1) CA Employment Development Department (City residents working anywhere. Data are not seasonally adjusted)

(*2) U.S. Census Bureau Local Employment Dynamics

(*3) Riverside County Projections (RCP10)

(*4) Decennial Census, US Census Bureau (in 1999 inflation-adjusted dollars).

(*5) 2007-2011 American Community Survey 5-Year Estimates (in 2011 inflation-adjusted dollars).

(*6) State Board of Equalization

Note: Totals might not add up due to rounding.

Comparing data between years may be problematic because of incorporations & annexations.

Projections are based on April 1, 2010 boundary; therefore, current or future employment in the annexed area may not be reflected in these projections.