

**CITY OF
DESERT HOT SPRINGS**

PIERSON BLVD

MISSION LAKES BLVD

INDIAN AVE

LITTLE MORONGO RD

14TH AVE

PALM DR

MIRACLE HILL RD

HACIENDA DR

CAMINO AVENTURA

MOUNTAIN VIEW RD

DILLON RD

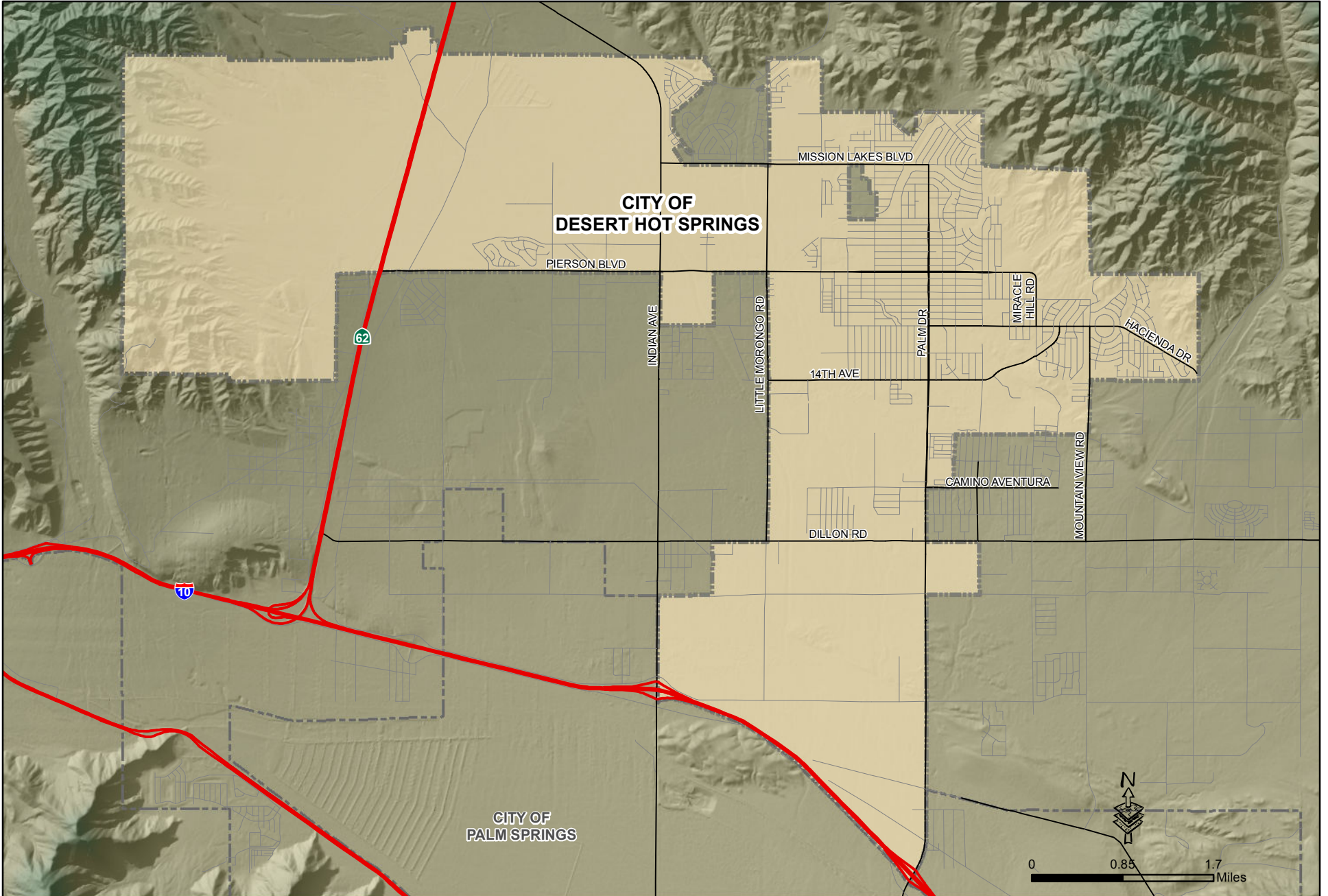
**CITY OF
PALM SPRINGS**

62

10



0 0.85 1.7 Miles





30.4 sq.miles

Incorporated in 1963

POPULATION CHARACTERISTICS

<table border="1" style="width: 100%; border-collapse: collapse;"> <thead> <tr> <th colspan="2" style="text-align: left;">Population</th> </tr> </thead> <tbody> <tr><td>1970</td><td>2,738 (*1)</td></tr> <tr><td>1980</td><td>5,941 (*1)</td></tr> <tr><td>1990</td><td>11,668 (*1)</td></tr> <tr><td>1995</td><td>15,100 (*2)</td></tr> <tr><td>1996</td><td>15,500 (*2)</td></tr> <tr><td>1997</td><td>15,900 (*2)</td></tr> <tr><td>1998</td><td>16,200 (*2)</td></tr> <tr><td>1999</td><td>16,400 (*2)</td></tr> <tr><td>2000</td><td>16,582 (*1)</td></tr> <tr><td>2001</td><td>16,664 (*2)</td></tr> <tr><td>2002</td><td>16,765 (*2)</td></tr> <tr><td>2003</td><td>17,070 (*2)</td></tr> <tr><td>2004</td><td>18,925 (*2)</td></tr> <tr><td>2005</td><td>20,294 (*2)</td></tr> <tr><td>2006</td><td>22,805 (*2)</td></tr> <tr><td>2007</td><td>24,124 (*2)</td></tr> <tr><td>2008</td><td>25,115 (*2)</td></tr> <tr><td>2009</td><td>25,690 (*2)</td></tr> <tr><td>2010</td><td>25,938 (*1)</td></tr> <tr><td>2011</td><td>27,277 (*2)</td></tr> <tr><td>2012</td><td>27,638 (*2)</td></tr> <tr><td colspan="2" style="text-align: left;">Projections</td></tr> <tr><td>2020</td><td>43,502 (*3)</td></tr> <tr><td>2035</td><td>58,052 (*3)</td></tr> </tbody> </table>	Population		1970	2,738 (*1)	1980	5,941 (*1)	1990	11,668 (*1)	1995	15,100 (*2)	1996	15,500 (*2)	1997	15,900 (*2)	1998	16,200 (*2)	1999	16,400 (*2)	2000	16,582 (*1)	2001	16,664 (*2)	2002	16,765 (*2)	2003	17,070 (*2)	2004	18,925 (*2)	2005	20,294 (*2)	2006	22,805 (*2)	2007	24,124 (*2)	2008	25,115 (*2)	2009	25,690 (*2)	2010	25,938 (*1)	2011	27,277 (*2)	2012	27,638 (*2)	Projections		2020	43,502 (*3)	2035	58,052 (*3)	<table border="1" style="width: 100%; border-collapse: collapse;"> <thead> <tr> <th colspan="4" style="text-align: center;">2012 Racial & Ethnic Population (*4)</th> </tr> <tr> <th></th> <th>Number</th> <th colspan="2">Percent</th> </tr> </thead> <tbody> <tr><td>White</td><td>9,314</td><td colspan="2">33.7%</td></tr> <tr><td>African American</td><td>2,018</td><td colspan="2">7.3%</td></tr> <tr><td>Asian</td><td>442</td><td colspan="2">1.6%</td></tr> <tr><td>Amer Indian/Alaska Native</td><td>470</td><td colspan="2">1.7%</td></tr> <tr><td>Hawaiian and Pac Islander</td><td>0</td><td colspan="2">0.0%</td></tr> <tr><td>Some Other Races</td><td>525</td><td colspan="2">1.9%</td></tr> <tr><td>Two or More Races</td><td>663</td><td colspan="2">2.4%</td></tr> <tr><td>Hispanic*</td><td>14,206</td><td colspan="2">51.4%</td></tr> <tr><td>Total</td><td>27,638</td><td colspan="2">100.0%</td></tr> <tr><td colspan="4">* Hispanic can be of any race</td></tr> </tbody> </table> <table border="1" style="width: 100%; border-collapse: collapse;"> <thead> <tr> <th colspan="5" style="text-align: center;">Vital Statistics (*5)</th> </tr> <tr> <th>Year</th> <th>Total Births</th> <th>Birth Rate*</th> <th>Total Death</th> <th>Death Rate*</th> </tr> </thead> <tbody> <tr><td>2008</td><td>522</td><td>20.8</td><td>187</td><td>7.4</td></tr> <tr><td>2009</td><td>488</td><td>19.0</td><td>165</td><td>6.4</td></tr> <tr><td>2010</td><td>464</td><td>17.0</td><td>178</td><td>6.5</td></tr> <tr><td colspan="5">* Rates per 1,000 population</td></tr> </tbody> </table>	2012 Racial & Ethnic Population (*4)					Number	Percent		White	9,314	33.7%		African American	2,018	7.3%		Asian	442	1.6%		Amer Indian/Alaska Native	470	1.7%		Hawaiian and Pac Islander	0	0.0%		Some Other Races	525	1.9%		Two or More Races	663	2.4%		Hispanic*	14,206	51.4%		Total	27,638	100.0%		* Hispanic can be of any race				Vital Statistics (*5)					Year	Total Births	Birth Rate*	Total Death	Death Rate*	2008	522	20.8	187	7.4	2009	488	19.0	165	6.4	2010	464	17.0	178	6.5	* Rates per 1,000 population					<table border="1" style="width: 100%; border-collapse: collapse;"> <thead> <tr> <th colspan="3" style="text-align: center;">2012 Population by Age (*4)</th> </tr> <tr> <th></th> <th>Number</th> <th>Percent</th> </tr> </thead> <tbody> <tr><td>< 5</td><td>11,434</td><td>7.4%</td></tr> <tr><td>5-9</td><td>12,516</td><td>8.1%</td></tr> <tr><td>10-14</td><td>14,063</td><td>9.1%</td></tr> <tr><td>15-19</td><td>13,289</td><td>8.6%</td></tr> <tr><td>20-24</td><td>11,434</td><td>7.4%</td></tr> <tr><td>25-34</td><td>20,087</td><td>13.0%</td></tr> <tr><td>35-44</td><td>26,114</td><td>16.9%</td></tr> <tr><td>45-54</td><td>21,478</td><td>13.9%</td></tr> <tr><td>55-59</td><td>7,571</td><td>4.9%</td></tr> <tr><td>60-64</td><td>5,254</td><td>3.4%</td></tr> <tr><td>65-74</td><td>7,108</td><td>4.6%</td></tr> <tr><td>75-84</td><td>3,245</td><td>2.1%</td></tr> <tr><td>85+</td><td>927</td><td>0.6%</td></tr> <tr><td>Total</td><td>154,520</td><td>100.0%</td></tr> <tr><td>Median Age:</td><td></td><td>30.2</td></tr> <tr><td>% of County:</td><td></td><td>1.2%</td></tr> </tbody> </table> <table border="1" style="width: 100%; border-collapse: collapse;"> <thead> <tr> <th colspan="3" style="text-align: center;">2012 Voter Registration (*6)</th> </tr> <tr> <th></th> <th>Number</th> <th>Percent</th> </tr> </thead> <tbody> <tr><td>Democrat</td><td>3,755</td><td>43.1%</td></tr> <tr><td>Republican</td><td>2,980</td><td>34.2%</td></tr> <tr><td>Other</td><td>436</td><td>5.0%</td></tr> <tr><td>No Party Preference</td><td>1,539</td><td>17.7%</td></tr> <tr><td>Total Registered</td><td>8,710</td><td>100.0%</td></tr> </tbody> </table> <table border="1" style="width: 100%; border-collapse: collapse;"> <thead> <tr> <th colspan="3" style="text-align: center;">2012 Population by Sex (*4)</th> </tr> <tr> <th></th> <th>Number</th> <th>Percent</th> </tr> </thead> <tbody> <tr><td>Male</td><td>14,137</td><td>51.1%</td></tr> <tr><td>Female</td><td>13,501</td><td>48.9%</td></tr> <tr><td>Total</td><td>27,638</td><td>100.0%</td></tr> </tbody> </table>	2012 Population by Age (*4)				Number	Percent	< 5	11,434	7.4%	5-9	12,516	8.1%	10-14	14,063	9.1%	15-19	13,289	8.6%	20-24	11,434	7.4%	25-34	20,087	13.0%	35-44	26,114	16.9%	45-54	21,478	13.9%	55-59	7,571	4.9%	60-64	5,254	3.4%	65-74	7,108	4.6%	75-84	3,245	2.1%	85+	927	0.6%	Total	154,520	100.0%	Median Age:		30.2	% of County:		1.2%	2012 Voter Registration (*6)				Number	Percent	Democrat	3,755	43.1%	Republican	2,980	34.2%	Other	436	5.0%	No Party Preference	1,539	17.7%	Total Registered	8,710	100.0%	2012 Population by Sex (*4)				Number	Percent	Male	14,137	51.1%	Female	13,501	48.9%	Total	27,638	100.0%
Population																																																																																																																																																																																																																												
1970	2,738 (*1)																																																																																																																																																																																																																											
1980	5,941 (*1)																																																																																																																																																																																																																											
1990	11,668 (*1)																																																																																																																																																																																																																											
1995	15,100 (*2)																																																																																																																																																																																																																											
1996	15,500 (*2)																																																																																																																																																																																																																											
1997	15,900 (*2)																																																																																																																																																																																																																											
1998	16,200 (*2)																																																																																																																																																																																																																											
1999	16,400 (*2)																																																																																																																																																																																																																											
2000	16,582 (*1)																																																																																																																																																																																																																											
2001	16,664 (*2)																																																																																																																																																																																																																											
2002	16,765 (*2)																																																																																																																																																																																																																											
2003	17,070 (*2)																																																																																																																																																																																																																											
2004	18,925 (*2)																																																																																																																																																																																																																											
2005	20,294 (*2)																																																																																																																																																																																																																											
2006	22,805 (*2)																																																																																																																																																																																																																											
2007	24,124 (*2)																																																																																																																																																																																																																											
2008	25,115 (*2)																																																																																																																																																																																																																											
2009	25,690 (*2)																																																																																																																																																																																																																											
2010	25,938 (*1)																																																																																																																																																																																																																											
2011	27,277 (*2)																																																																																																																																																																																																																											
2012	27,638 (*2)																																																																																																																																																																																																																											
Projections																																																																																																																																																																																																																												
2020	43,502 (*3)																																																																																																																																																																																																																											
2035	58,052 (*3)																																																																																																																																																																																																																											
2012 Racial & Ethnic Population (*4)																																																																																																																																																																																																																												
	Number	Percent																																																																																																																																																																																																																										
White	9,314	33.7%																																																																																																																																																																																																																										
African American	2,018	7.3%																																																																																																																																																																																																																										
Asian	442	1.6%																																																																																																																																																																																																																										
Amer Indian/Alaska Native	470	1.7%																																																																																																																																																																																																																										
Hawaiian and Pac Islander	0	0.0%																																																																																																																																																																																																																										
Some Other Races	525	1.9%																																																																																																																																																																																																																										
Two or More Races	663	2.4%																																																																																																																																																																																																																										
Hispanic*	14,206	51.4%																																																																																																																																																																																																																										
Total	27,638	100.0%																																																																																																																																																																																																																										
* Hispanic can be of any race																																																																																																																																																																																																																												
Vital Statistics (*5)																																																																																																																																																																																																																												
Year	Total Births	Birth Rate*	Total Death	Death Rate*																																																																																																																																																																																																																								
2008	522	20.8	187	7.4																																																																																																																																																																																																																								
2009	488	19.0	165	6.4																																																																																																																																																																																																																								
2010	464	17.0	178	6.5																																																																																																																																																																																																																								
* Rates per 1,000 population																																																																																																																																																																																																																												
2012 Population by Age (*4)																																																																																																																																																																																																																												
	Number	Percent																																																																																																																																																																																																																										
< 5	11,434	7.4%																																																																																																																																																																																																																										
5-9	12,516	8.1%																																																																																																																																																																																																																										
10-14	14,063	9.1%																																																																																																																																																																																																																										
15-19	13,289	8.6%																																																																																																																																																																																																																										
20-24	11,434	7.4%																																																																																																																																																																																																																										
25-34	20,087	13.0%																																																																																																																																																																																																																										
35-44	26,114	16.9%																																																																																																																																																																																																																										
45-54	21,478	13.9%																																																																																																																																																																																																																										
55-59	7,571	4.9%																																																																																																																																																																																																																										
60-64	5,254	3.4%																																																																																																																																																																																																																										
65-74	7,108	4.6%																																																																																																																																																																																																																										
75-84	3,245	2.1%																																																																																																																																																																																																																										
85+	927	0.6%																																																																																																																																																																																																																										
Total	154,520	100.0%																																																																																																																																																																																																																										
Median Age:		30.2																																																																																																																																																																																																																										
% of County:		1.2%																																																																																																																																																																																																																										
2012 Voter Registration (*6)																																																																																																																																																																																																																												
	Number	Percent																																																																																																																																																																																																																										
Democrat	3,755	43.1%																																																																																																																																																																																																																										
Republican	2,980	34.2%																																																																																																																																																																																																																										
Other	436	5.0%																																																																																																																																																																																																																										
No Party Preference	1,539	17.7%																																																																																																																																																																																																																										
Total Registered	8,710	100.0%																																																																																																																																																																																																																										
2012 Population by Sex (*4)																																																																																																																																																																																																																												
	Number	Percent																																																																																																																																																																																																																										
Male	14,137	51.1%																																																																																																																																																																																																																										
Female	13,501	48.9%																																																																																																																																																																																																																										
Total	27,638	100.0%																																																																																																																																																																																																																										

Sources: (*1) Decennial Census, US Census Bureau

(*2) January Estimate, CA State Department of Finance

(*3) Riverside County Projections (RCP10)

(*4) American Community Survey 2007-2011 5-Year Estimates and CA State Department of Finance

(*5) Riverside County Department of Public Health

(*6) California Secretary of State, September 2012

Note: Totals might not add up due to rounding.

Comparing data between years may be problematic because of incorporations & annexations.

Projections are based on April 1, 2010 boundary; therefore current or future dwelling units in the annexed area may not be reflected in these projections.

DESERT HOT SPRINGS

HOUSING & HOUSEHOLD CHARACTERISTICS

Housing Units			Housing Units by Type				
1970	1,832	(*1)		2010 (*1)	Percent	2012 (*2)	Percent
1980	3,590	(*1)	Single Detached	7,135	65.4%	7,214	62.8%
1990	5,494	(*1)	Single Attached	189	1.7%	188	1.6%
2000	7,034	(*1)	Multi-Family: 2 to 4	1,574	14.4%	1,673	14.6%
2001	7,046	(*2)	Multi-Family: 5 Plus	1,418	13.0%	1,535	13.4%
2002	7,068	(*2)	Mobile Homes	586	5.4%	871	7.6%
2003	7,171	(*2)	Total Units	10,902	100.0%	11,481	100.0%
2004	7,947	(*2)	Occupancy	8,650	79.3%	9,109	79.3%
2005	8,583	(*2)	Vacancy	2,252	20.7%	2,372	20.7%
2006	9,751	(*2)	Median Home Price (*4)				
2007	10,427	(*2)	2002	\$98,000	Housing Unit Building Permits (*5)		
2008	10,907	(*2)	2003	\$132,750			
2009	11,054	(*2)	2004	\$175,000			
2010	10,902	(*1)	2005	\$268,000			
2011	11,419	(*2)	2006	\$302,500			
2012	11,481	(*2)	2007	\$281,250			
			2008	\$131,750			
			2009	\$89,500			
			2010	\$95,000			
			2011	\$90,000			
			2012*	\$83,000			
			*October 2012				
			Persons Per Household				
			2000	2.80	(*1)	* Preliminary October 2012	
			2010	2.98	(*1)		
			2012	3.02	(*2)		
			Projections				
2020	20,229	(*3)					
2035	26,501	(*3)					

Sources: (*1) Decennial Census, US Census Bureau

(*2) January Estimate, CA State Department of Finance

(*3) Riverside County Projections (RCP10)

(*4) DataQuick Reports

(*5) US Department of Housing & Urban Development, State of the Cities Data Systems

Note: Totals might not add up due to rounding.

Comparing data between years may be problematic because of incorporations & annexations.

Projections are based on April 1, 2010 boundary; therefore current or future dwelling units in the annexed area may not be reflected in these projections.

DESERT HOT SPRINGS

ECONOMIC AND LABOR FORCE CHARACTERISTICS

Labor Force Participation (*1)				
Year	Labor Force	Employed	Unemployed	Unemployment Rate
2007	9,100	8,300	800	8.7%
2008	9,300	8,100	1,100	12.1%
2009	9,500	7,700	1,800	18.8%
2010	9,600	7,600	2,000	20.4%
2011	9,800	7,900	1,900	19.0%
2012*	9,700	8,000	1,600	16.9%

* Preliminary October 2012

Employment/Jobs Projections (*3)	
2020	5,028
2035	7,117

* Jobs within city boundary

2010 Employment/Jobs by Industry Sector* (*2)	
Agriculture, Forestry, Fishing and Hunting	8
Mining, Quarrying, and Oil and Gas Extraction	0
Utilities	248
Construction	101
Manufacturing	27
Wholesale Trade	34
Retail Trade	552
Transportation and Warehousing	51
Information	10
Finance and Insurance	229
Real Estate and Rental and Leasing	58
Professional, Scientific, and Technical Services	34
Management of Companies and Enterprises	0
Administration & Support, Waste Mngt and Remediation	85
Educational Services	442
Health Care and Social Assistance	228
Arts, Entertainment, and Recreation	4
Accommodation and Food Services	612
Other Services (excluding Public Administration)	325
Public Administration	84
Total All Jobs	3,132

*Jobs within city boundary

Median Household Income	
2000	\$ 25,987 (*4)
2011	\$ 34,606 (*5)

Taxable Sales in 1,000s of Dollars (*6)		
Year	Total	% of County
2003	\$71,943	0.3%
2004	\$82,056	0.3%
2005	\$94,182	0.3%
2006	\$95,513	0.3%
2007	\$94,617	0.3%
2008	\$91,671	0.4%
2009	\$79,192	0.4%
2010	\$89,328	0.4%

Sources: (*1) CA Employment Development Department (City residents working anywhere. Data are not seasonally adjusted)

(*2) U.S. Census Bureau Local Employment Dynamics

(*3) Riverside County Projections (RCP10)

(*4) Decennial Census, US Census Bureau (in 1999 inflation-adjusted dollars).

(*5) 2007-2011 American Community Survey 5-Year Estimates (in 2011 inflation-adjusted dollars).

(*6) State Board of Equalization

Note: Totals might not add up due to rounding.

Comparing data between years may be problematic because of incorporations & annexations.

Projections are based on April 1, 2010 boundary; therefore, current or future employment in the annexed area may not be reflected in these projections.