

SAN BERNARDINO
COUNTY

CITY OF
JURUPA VALLEY

CITY OF
EASTVALE

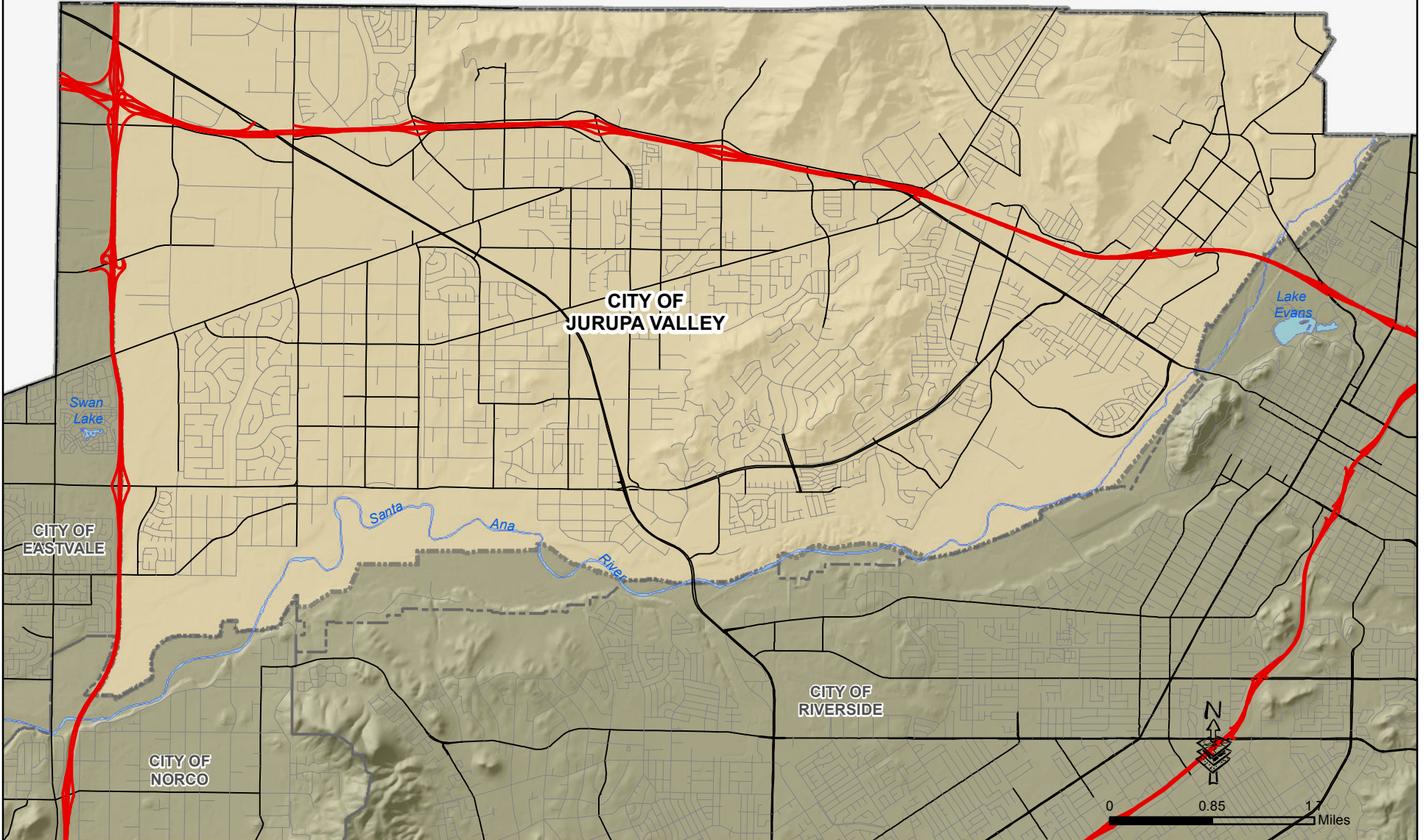
CITY OF
NORCO

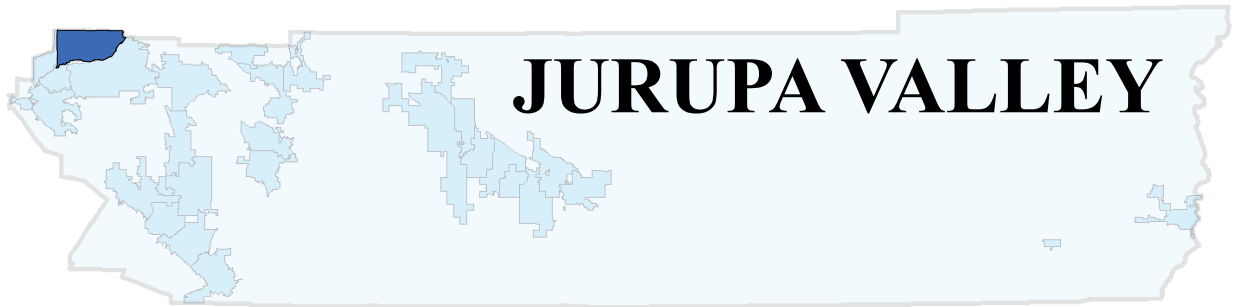
CITY OF
RIVERSIDE

Lake
Evans

Swan
Lake

Santa
Ana
River





43.7 sq.miles

Incorporated in 2011

POPULATION CHARACTERISTICS

Population	2012 Racial & Ethnic Population (*4)	2012 Population by Age (*4)
1970 -	Number Percent	Number Percent
1980 -	White 24,500 25.4%	< 5 7,909 8.2%
1990 -	African American 3,858 4.0%	5-9 7,716 8.0%
1995 -	Asian 2,701 2.8%	10-14 8,102 8.4%
1996 -	Amer Indian/Alaska Native 193 0.2%	15-19 9,356 9.7%
1997 -	Hawaiian and Pac Islander 96 0.1%	20-24 8,102 8.4%
1998 -	Some Other Races 193 0.2%	25-34 12,250 12.7%
1999 -	Two or More Races 1,254 1.3%	35-44 13,311 13.8%
2000 -	Hispanic* 63,661 66.0%	45-54 13,022 13.5%
2001 -	Total 96,456 100.0%	55-59 5,016 5.2%
2002 -	* Hispanic can be of any race	60-64 3,955 4.1%
2003 -		65-74 4,341 4.5%
2004 -	Vital Statistics (*5)	75-84 2,411 2.5%
2005 -	Year Total Births Birth Rate* Total Death Death Rate*	85+ 965 1.0%
2006 -	2007 - - - - -	Total 96,456 100.0%
2007 -	2009 1,497 - 485 -	Median Age: 31.2
2008 -	2010 1,452 54.5 517 19.4	% of County: 4.3%
2009 -	* Rates per 1,000 population	
2010 95,004 (*1)	2012 Voter Registration (*6)	2012 Population by Sex (*4)
2011 96,680 (*2)	Number Percent	Number Percent
2012 96,456 (*2)	Democrat 12,668 39.2%	Male 48,710 50.5%
Projections	Republican 12,359 38.3%	Female 47,746 49.5%
2020 103,714 (*3)	Other 1,458 4.5%	Total 96,456 100.0%
2035 125,950 (*3)	No Party Preference 5,820 18.0%	
	Total Registered 32,305 100.0%	

Sources: (*1) Decennial Census, US Census Bureau

(*2) July Estimate, CA State Department of Finance

(*3) Riverside County Projections (RCP10)

(*4) American Community Survey 2007-2011 5-Year Estimates and CA State Department of Finance

(*5) Riverside County Department of Public Health

(*6) California Secretary of State, September 2012

Note: Totals might not add up due to rounding.

Comparing data between years may be problematic because of incorporations & annexations.

Projections are based on April 1, 2010 boundary; therefore current or future dwelling units in the annexed area may not be reflected in these projections.

JURUPA VALLEY

HOUSING & HOUSEHOLD CHARACTERISTICS

Housing Units		Housing Units by Type			
		2010 (*1)	Percent	2012 (*2)	Percent
1970	-	Single Detached	-	20,050	75.7%
1980	-	Single Attached	-	966	3.6%
1990	-	Multi-Family: 2 to 4	-	835	3.2%
2000	-	Multi-Family: 5 Plus	-	2,397	9.1%
2001	-	Mobile Homes	-	2,233	8.4%
2002	-	Total Units	-	26,481	100.0%
2003	-	Occupancy	-	24,804	93.7%
2004	-	Vacancy	-	1,677	6.3%
2005	-	Median Home Price (*4)			
2006	-	2002	\$171,250	Housing Unit Building Permits (*5)	
2007	-	2003	\$215,000		
2008	-	2004	\$287,500		
2009	-	2005	\$392,500		
2010	26,481 (*1)	2006	\$443,750		
2011	26,644 (*2)	2007	\$419,500		
2012	26,680 (*2)	2008	\$246,000		
		2009	\$163,875		
		2010	\$168,500		
		2011	\$164,000		
		2012*	\$175,000		
		*Jan-Oct 2012			
		Persons Per Household			
		2000	-		
		2010	3.80 (*1)		
		2012	3.83 (*2)		
		Projections			
2020	28,949 (*3)	2009	-	2010	-
2035	35,550 (*3)	2008	-	2011	-
		2007	-	2012	-
		2006	-		
		2005	-		
		2004	-		
		2003	-		
		2002	-		
		2001	-		
		2000	-		
		1999	-		
		1998	-		
		1997	-		
		1996	-		
		1995	-		

Sources: (*1) Decennial Census, US Census Bureau

(*2) January Estimate, CA State Department of Finance

(*3) Riverside County Projections (RCP10)

(*4) DataQuick Reports

(*5) US Department of Housing & Urban Development, State of the Cities Data Systems

Note: Totals might not add up due to rounding.

Comparing data between years may be problematic because of incorporations & annexations.

Projections are based on April 1, 2010 boundary; therefore current or future dwelling units in the annexed area may not be reflected in these projections.

JURUPA VALLEY

ECONOMIC AND LABOR FORCE CHARACTERISTICS

Labor Force Participation (*1)				
Year	Labor Force	Employed	Unemployed	Unemployment Rate
2007	-	-	-	-
2008	-	-	-	-
2009	-	-	-	-
2010	-	-	-	-
2011	-	-	-	-
2012*	-	-	-	-

* Preliminary October 2012

Employment/Jobs Projections (*3)	
2020	34,397
2035	53,466

* Jobs within city boundary

2010 Employment/Jobs by Industry Sector* (*2)	
Agriculture, Forestry, Fishing and Hunting	80
Mining, Quarrying, and Oil and Gas Extraction	12
Utilities	228
Construction	2,268
Manufacturing	2,474
Wholesale Trade	1,119
Retail Trade	2,459
Transportation and Warehousing	4,183
Information	319
Finance and Insurance	131
Real Estate and Rental and Leasing	292
Professional, Scientific, and Technical Services	557
Management of Companies and Enterprises	299
Administration & Support, Waste Mngt and Remediation	859
Educational Services	2,377
Health Care and Social Assistance	1,097
Arts, Entertainment, and Recreation	302
Accommodation and Food Services	1,276
Other Services (excluding Public Administration)	1,070
Public Administration	249
Total All Jobs	21,651

*Jobs within city boundary

Median Household Income	
2000	- (*4)
2011	\$ 58,560 (*5)

Taxable Sales in 1,000s of Dollars (*6)		
Year	Total	% of County
2003	-	-
2004	-	-
2005	-	-
2006	-	-
2007	-	-
2008	-	-
2009	-	-
2010	-	-

Sources: (*1) CA Employment Development Department (City residents working anywhere. Data are not seasonally adjusted)

(*2) U.S. Census Bureau Local Employment Dynamics

(*3) Riverside County Projections (RCP10)

(*4) Decennial Census, US Census Bureau (in 1999 inflation-adjusted dollars).

(*5) 2007-2011 American Community Survey 5-Year Estimates (in 2011 inflation-adjusted dollars).

(*6) State Board of Equalization

Note: Totals might not add up due to rounding.

Comparing data between years may be problematic because of incorporations & annexations.

Projections are based on April 1, 2010 boundary; therefore, current or future employment in the annexed area may not be reflected in these projections.